



# Energize CT Programs

Larry Rush  
Manager, Conservation & Load Management  
AVANGRID



**1**

**Residential Energy Efficiency Programs**

**2**

**Small Business Program**

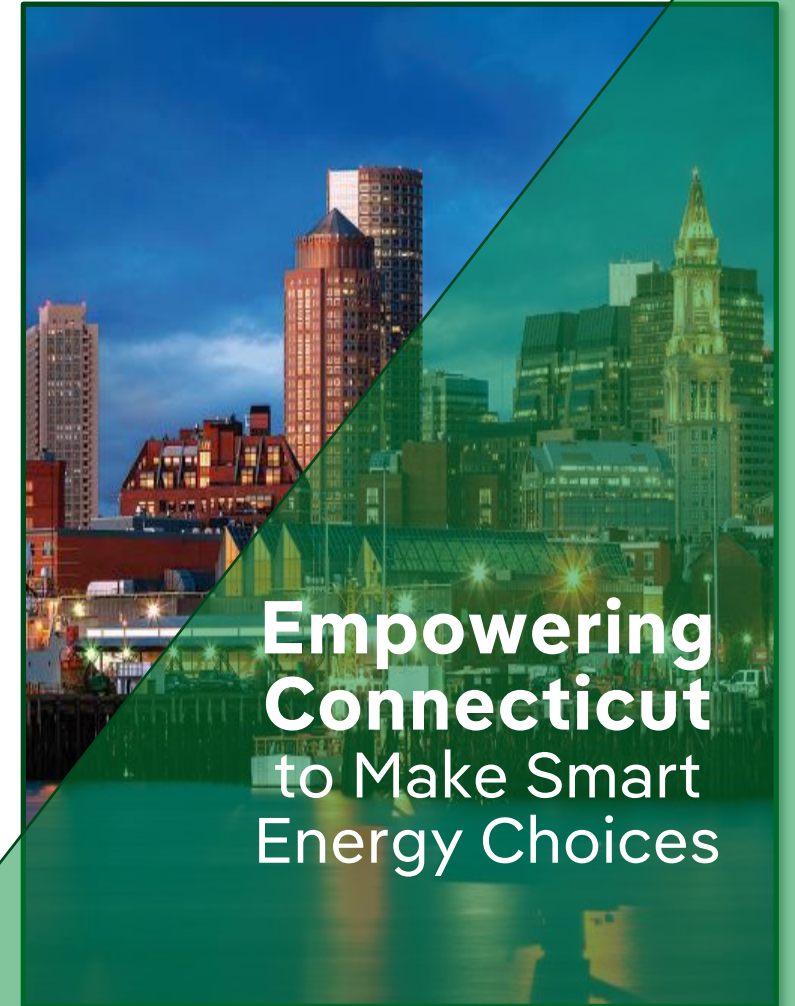
**3**

**Additional Programs**



Eversource, CNG, SCG and UI, the Energy Efficiency Board, Connecticut Green Bank, and the state have united on a shared mission—to provide Connecticut residents and businesses the resources they need to **save money and use clean energy.**

The Energize Connecticut initiative empowers our communities to make smart energy choices, now and in the future.





# Residential Energy Efficiency Programs



# Residential Energy Efficiency Programs

---



- Home Energy Solutions<sup>SM</sup> (HES) and Home Energy Solutions-Income Eligible (HES-IE)
- Multifamily Initiative
- Heating, Cooling and Water Heating
- New Construction

# HES and HES-IE (1-4 Family Homes)



- In-home, direct installation weatherization program designed to help customers save energy and money and make their homes comfortable
- Safety testing
- Customer education
- Assess opportunities to receive rebates, incentives or “instant” discounts for add-on measures





Core services offered to customers for a **\$50** fee, HES-IE customers have no co-pay



Services valued at about \$1,000



Estimated annual savings of \$200



HES-IE customers receive custom proposal for “add-on measures” at little to no cost to customer

# Add-On Measures

---



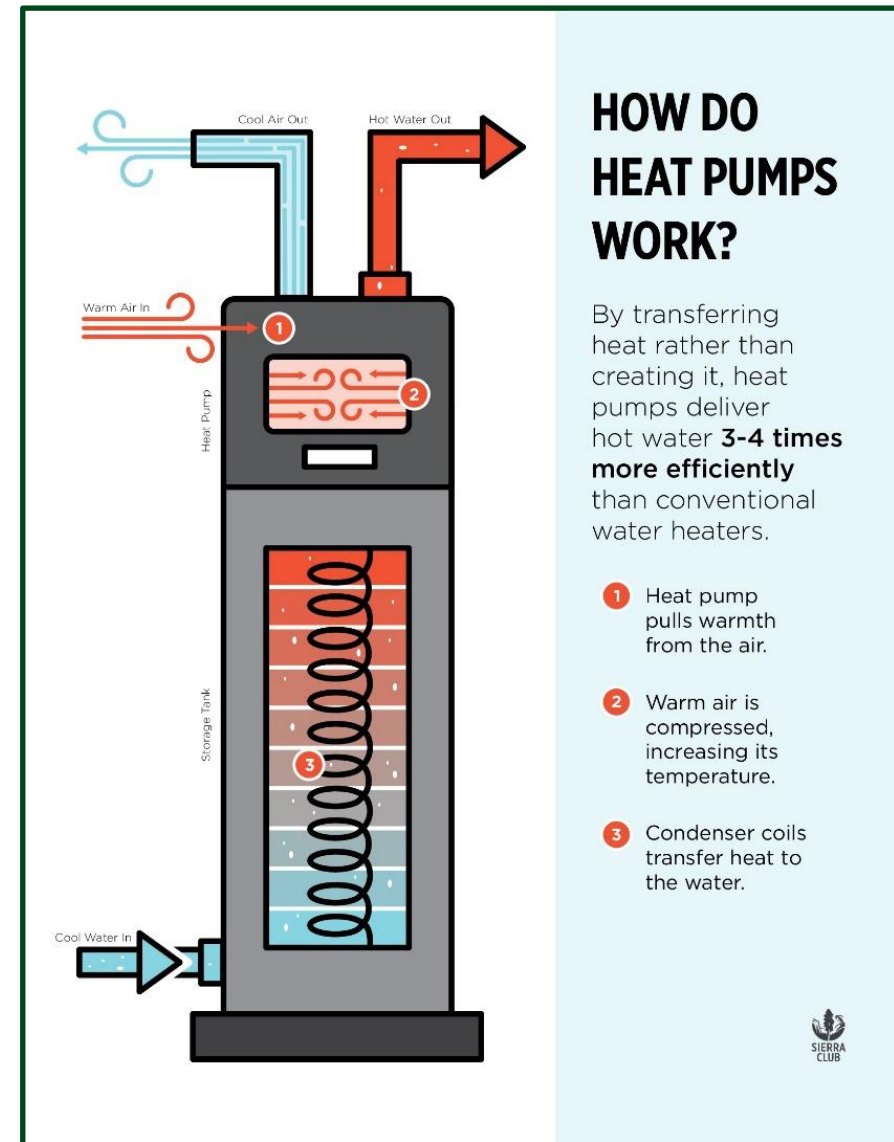
- ✓ Insulation
- ✓ Central AC
- ✓ Air Source Heat Pumps
- ✓ Ductless Heat Pumps
- ✓ Windows
- ✓ Appliances
- ✓ Furnaces
- ✓ Boilers
- ✓ Circulator Pumps
- ✓ Natural Gas Water Heaters
- ✓ Heat Pump Water Heaters
- ✓ Wi-Fi Thermostats



# HVAC and Water Heating



- Incentive Channels:
  - Instant Discount
  - Rebates
  - QR Code
- Heat Pump Installer Network



# HVAC Incentives



Measure	Incentive	Eligibility
<b>Heating and Cooling Rebates and Instant Discounts</b>		
Advanced Duct Sealing	<b>\$1,000/home</b>	<ul style="list-style-type: none"> <li>• Must have heating and/or cooling systems with new or existing ductwork present</li> <li>• A TrueFlow® test is required for all systems listed as part of this rebate. Total incentive cannot be more than 100% of the total cost of the qualifying ADS service. If customer received ADS services through the Home Energy Solutions or Home Energy Solutions–Income Eligible programs, they are not eligible for this rebate.</li> </ul>
Air Source Heat Pumps	<b>\$250/ton</b> \$15,000 maximum combined incentive	Must be listed on the Energize CT Heat Pump Qualified Products List. Instant discount at point-of-sale to licensed contractors at participating equipment distributor locations only. Up to three systems per home.
	<b>Additional \$1,000/ton</b> \$15,000 maximum combined incentive	Must be listed on the Energize CT Heat Pump Qualified Products List. Mail-in rebate is an additional incentive available only for qualified equipment installed by a contractor participating in the Energize CT Heat Pump Installer Network to replace existing natural gas, electric resistance, oil and propane as the primary heating source.
ECM Boiler Circulator Pump, Variable Speed	<b>\$35/unit</b>	Instant discount at participating distributors; approved models only.
Ground Source Heat Pump	<b>\$2,000/ton</b> \$15,000 maximum rebate	ENERGY STAR® certified: <ul style="list-style-type: none"> <li>• Closed Loop Water to Air: 17.1 EER / 3.6 COP Minimum</li> <li>• Direct Expansion Refrigerant: 16.0 EER / 3.6 COP Minimum</li> <li>• Water to Water: 16.1 EER / 3.1 COP Minimum</li> </ul>
Natural Gas Boiler (Hot Water)	<b>\$750/unit</b>	ENERGY STAR certified: ≥ 95% AFUE, AHRI rated or greater with Temperature or Purge Control (including gas conversion). Installed by a licensed contractor. New condensing model must be replacing an existing non-condensing model. Rebate provided after pre-verification inspection.
Natural Gas Furnace (Warm Air)	<b>\$650/unit</b>	ENERGY STAR certified: ≥ 95% AFUE, AHRI rated: with Electronically Commutated Motor (ECM). Installed by a licensed contractor. New condensing model must be replacing an existing non-condensing model. Rebate provided after pre-verification inspection.

# Water Heating Incentives

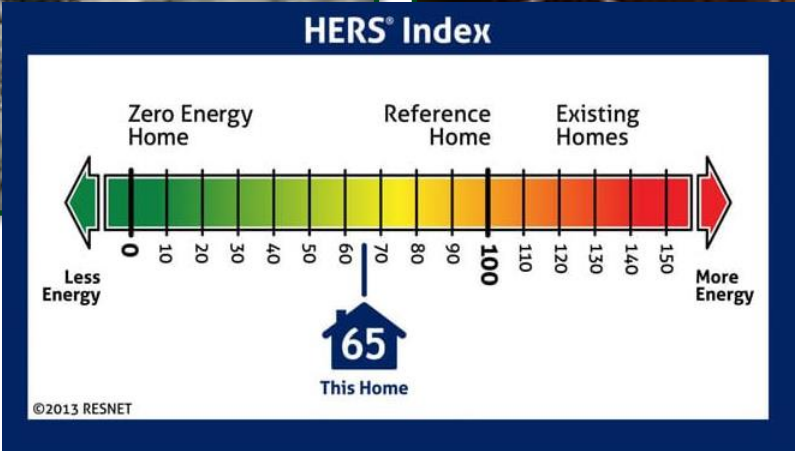
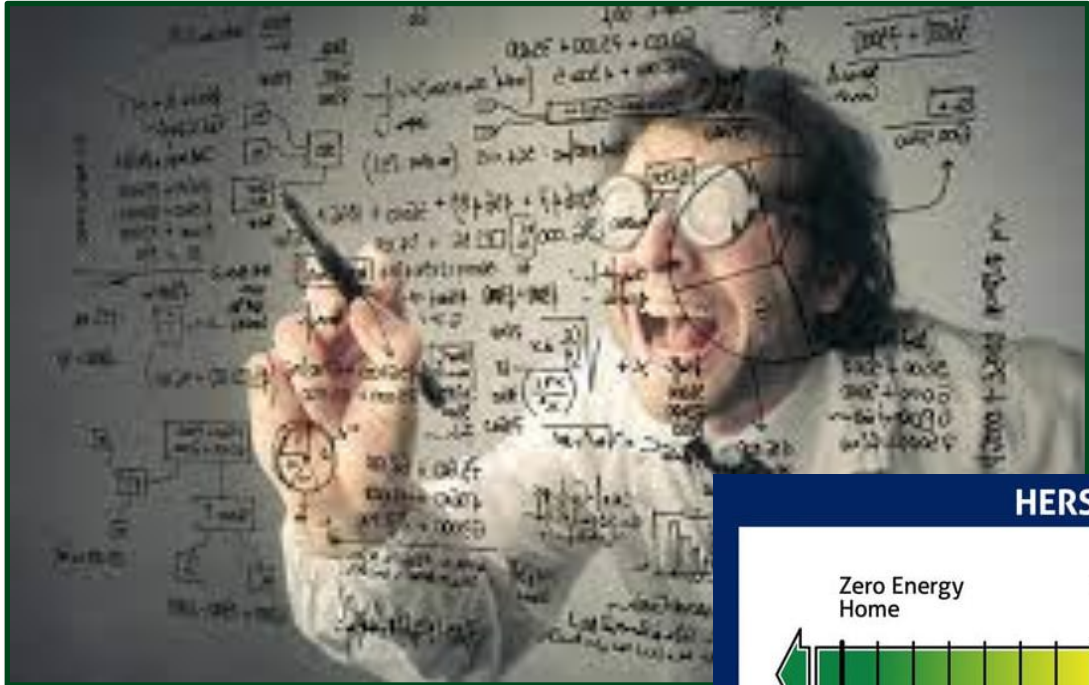


Water Heating Instant Discount			
Heat Pump Water Heater	<b>\$750/unit</b>	ENERGY STAR certified with Uniform Energy Factor (UEF) of 3.30 or greater. Instant discount at participating retailers and distributors.	No
		ENERGY STAR certified with UEF of 2.20 or greater and 120-volt/15-amp circuit. Instant discount at participating retailers and distributors.	No
Split-System Heat Pump Water Heater	<b>\$750/system</b>	ENERGY STAR certified with UEF of 2.20 or greater. Instant discount at participating retailers and distributors.	No
Natural Gas Condensing Storage Water Heater	<b>\$300/unit</b>	ENERGY STAR certified: $UEF \geq 0.80$ . Installed by a licensed contractor. Instant discount at participating distributors.	No
Natural Gas Tankless (On-Demand) Water Heater	<b>\$300/unit</b>	ENERGY STAR certified: $UEF \geq 0.92$ . Installed by a licensed contractor. Instant discount at participating distributors.	No

# Residential New Construction



- Incentives for customers who go beyond code
- Incentives based on Home Energy Rating System



# Multifamily Initiative



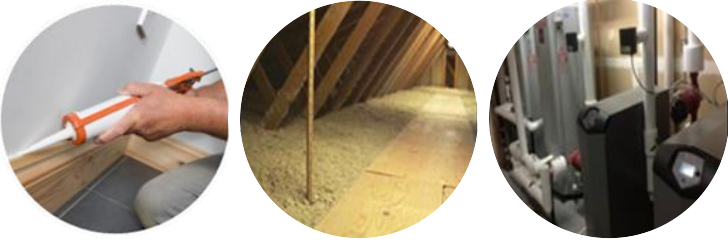
- Statewide comprehensive initiative to provide customized solutions for existing multifamily properties with 5+ units
  - Assistance with energy efficiency upgrades
  - Comprehensive energy assessments of a building's energy-saving opportunities
  - Incentives and financing for energy-saving upgrades
- Open to any customer regardless of heating fuel
- Combines residential and commercial and industrial programs offering flexibility with scope of work



# 2023 Multifamily Initiative Incentive Structure



Comprehensive Projects	Single End Use	Direct Install Measures
Up to 65% of Project Cost	Up to 50% of Measure Cost	Up to 100% of Installed Cost
Up to 90% of Project Cost	Up to 75% of Measure Cost	Up to 100% of Installed Cost



## Direct Install Measures

- ✓ Air Sealing
- ✓ Duct Sealing
- ✓ Low-Flow Faucet Aerators and Shower Heads

## Envelope and System Measures

- ✓ Ductless Heat Pumps
- ✓ LED Lighting Fixtures
- ✓ Insulation
- ✓ HVAC & DHW System Upgrades
- ✓ Windows
- ✓ Appliances
- ✓ HVAC Controls

## Custom Measures

- ✓ Advanced Lighting Protocols
- ✓ Central HVAC Pipe Insulation
- ✓ Central Mechanical Ventilation
- ✓ Steam Trap Repairs
- ✓ Chillers
- ✓ Smart Thermostats

# Energy Efficiency Measures



# Financing Mechanisms



## Energize CT

- ✓ Health and Safety Revolving Loan Fund
- ✓ Multifamily Commercial Loan

## Capital For Change

- ✓ Loans Improving Multifamily Efficiency (LIME)

## Connecticut Green Bank

- ✓ Navigator Pre-Development Energy Loan C-PAC





# Small Business Energy Advantage (SBEA)



# What is the SBEA Program?



## Educating Customers

- Value of energy efficiency
- Benefits of replacing equipment and reduced maintenance costs
- Contributing to sustainable future
- Improved built environment for their employees and their customers



## Provide High Quality Service and Installation

- Comprehensive review of all opportunities on site
- Accurate and complete assessments
- Frequent communication on project
- Keeping tracking systems up to date
- Warrantied workmanship



## Support Incentives and Financing

- Provide cost effective pricing for custom measures
- Leverage comprehensive incentives wherever possible
- Utilize on-bill financing to support customer cash flow objectives

# What's included in SBEA?



- Two pathways
  - SBEA – 200 kW average monthly usage
  - SBEA Microbusiness – 25 kW average monthly usage
- Customers receive a no-cost energy assessment with a comprehensive proposal by verified contractor
- General incentives for energy-saving measures
- No upfront costs
- Zero (0%) financing with on-bill repayment
- One year warranty on contractors' parts and labor



# Microbusiness Program



- Programs to help support our smallest local businesses
- Incentive worth 80% of the project cost
  - Incentive capped at \$16,000
  - Only non-equipment measures
- Pre-approved financing up to \$4,000 with a term payback of up to 60 months

## Micro-Small Business Energy Advantage

while running your small business. Take advantage of energy-saving tips, incentives and other solutions to help your business grow.



# Common Energy Efficiency Measures



Lighting and Controls	Insulation and Weatherization	Pipe Insulation
Kitchen Hood Controls	Windows	Open Refrigerated Case Door
Steam Traps	Clothes Washers and Dryers	HVAC Heat Recovery
Smart Thermostats	CO <sub>2</sub> Controls / OA Reduction	Heat Pumps
Spray Valves / Aerators / Shower Heads		



# EXISTING BUILDINGS

## TIERED PROJECT INITIATIVE

	GREATER OF		PLUS	PLUS	PLUS	Not to exceed	PROJECT QUALIFICATION
	per kWh	per kW	per Natural Gas CCF	per Oil Gallon <sup>^</sup>	per Propane Gallon <sup>^</sup>	PROJECT CAP	
<b>TOTAL COMPREHENSIVE INCENTIVE</b>							
Three or more End Uses*	\$0.65	\$1,000/ summer peak	\$6.00	\$8.00	\$6.00	65% of Installed Cost	<ul style="list-style-type: none"> <li>If lighting end use is needed to qualify for this tier, lighting must be at least Enhanced Performance</li> <li>To include standard lighting, project must qualify for this tier independent of the lighting</li> </ul>
<b>MULTI END USE OR EMS</b>							
Minimum two End Uses*	\$0.50	\$1,000/ summer peak	\$5.00	\$7.00	\$5.00	50% of Installed Cost	<ul style="list-style-type: none"> <li>A control device/system that only sets the space temperature or only controls lighting is not an EMS</li> </ul>
<b>SINGLE NON LIGHTING END USE</b>							
Minimum one non-lighting End Use	\$0.40	\$1,000/ summer peak	\$4.00	\$6.00	\$4.00	40% of Installed Cost	<ul style="list-style-type: none"> <li>Project must impact at least one non-lighting End Use</li> <li>If lighting is the only measure, - DO NOT USE - refer to below "Lighting Measures" table</li> </ul>
End use is defined as Gas, Electric, Oil, or Propane fuels impacting Heating; Cooling; Lighting; Process; Domestic Water Heating; Refrigeration; Motors and Drives. Incentives are not available for the replacement of an existing condensing heating system. Pre-inspections are required of all non-condensing existing equipment. *No one end use can exceed 90% of the project's value based on annual BTU savings and each qualifying end use must contribute at least 3% <sup>^</sup> per gallon incentives apply only to oil or propane, alternative fuel sources do not qualify							



## LIGHTING MEASURES

	GREATER OF		Not to exceed	PROJECT QUALIFICATION	PLUS
	per kWh	per kW	PROJECT CAP		Lighting Designer Incentive
<b>HIGH PERFORMANCE LIGHTING</b>					
LED Fixtures with Networked Lighting Controls System	\$0.65	\$1,000/ summer peak	65% of Installed Cost	80% of project load must utilize a networked lighting control system, as defined by DLC <sup>1</sup> . System must be capable of energy monitoring and demand response, as defined by DLC. Customer must also provide control narrative for the system, and it must be fully commissioned with reporting and demonstrated demand response capability.	\$0.06/kWh, capped at \$5,000
<b>ENHANCED PERFORMANCE LIGHTING</b>					
LED Lighting with Luminaire Level Lighting Controls or Wirelessly Accessible Controls	\$0.45	\$1,000/ summer peak	45% of Installed Cost	80% of project load must consist of LED fixtures <sup>1</sup> , with digital control and wireless accessibility to initialize, configure, and commission the system. Must include and demonstrate a minimum of one control strategy per fixture and two different control strategies at the project level; e.g., occupancy, daylighting, task tuning/ high end trim. (Small group control is advised, recommend up to 300W of controlled LED fixtures per group within same physical space and/or group space up to 1,000 sq. ft. floor area.)	\$0.04/kWh, capped at \$5,000
<b>STANDARD LIGHTING</b>					
LED Lighting	\$0.25	\$1,000/ summer peak	25% of Installed Cost	The Energy Efficiency Consultant reserves the right to review each claim and direct you to the required pathway. <b>For Express Lighting Rebate refer to the Lighting Rebate Form on <a href="http://EnergizeCT.com">EnergizeCT.com</a>.</b>  Type C retrofit LED full kits or type C lamps with external drivers are the only (tube) product options that qualify for this incentive for Eversource customers. For Standard Lighting projects Eversource customers should utilize the expedited lighting application; for access email <a href="mailto:commercial@eversource.com">commercial@eversource.com</a> .	\$0.02/kWh, capped at \$5,000

# Heat Pump Optimization Incentive Update for Energize CT



## Rebate Tiers

Equipment	Rebate Amount
Air Source Heat Pumps	<p>&lt;= 30 tons: \$2,000 per ton &gt; 30 tons -100 tons: \$1,500 per ton &gt; 100-150 tons: \$1,000 per ton &gt; 150 tons will be evaluated for a custom incentive</p>
Variable Refrigerant Flow (VRF) Heat Pumps	<p>&lt;=30 tons: \$3,000 per ton &gt; 30 tons - 100 tons: \$2,500 per ton &gt; 100-150 tons: \$2,000 per ton &gt; 150 tons will be evaluated for a custom incentive</p>
Example	<p><u>102 ton VRF project rebate:</u> 30 tons x \$3,000 = \$90,000 70 tons x \$2,500 = \$175,000 2 tons x \$2,000 = \$4,000 Total = \$269,000</p>

For more information, including rebate terms and conditions, see the [2023 Commercial Heat Pump Energy Optimization Rebate Form](#).



# Financing Options

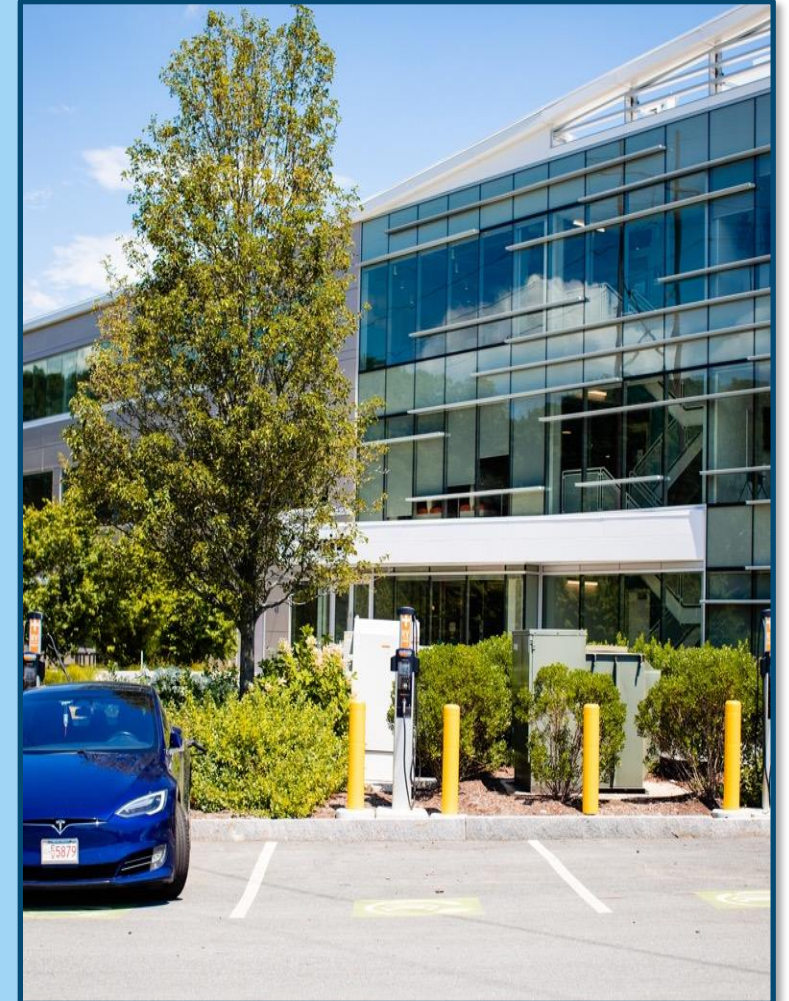


- **MBEA** - \$500 to \$4,000 max 60 months on-bill repayment option
- **SBEA** - \$500 to \$100,000 (0%) max 60 months on-bill repayment option
- **Municipal** – Up to \$500,000 (0%) max 60 months on-bill repayment option

# Financing EV Charging for Small Business



- On-bill financing for qualifying EV charging with SBEA projects available in 2023
- Projects must include qualifying SBEA measures to consider financing EV chargers
- EV rebate incentives will flow through our Electric Vehicle Program but financing through us directly on your electric bill





# Additional Programs



Smart Solutions  
UI • SCG • CNG

Shopping at  
Home ▾

Search

Exclusive Offerings

Shop Energy-Efficient Products ▾

Enroll in Home Services ▾

# Cozy Up this Fall

Shop Now



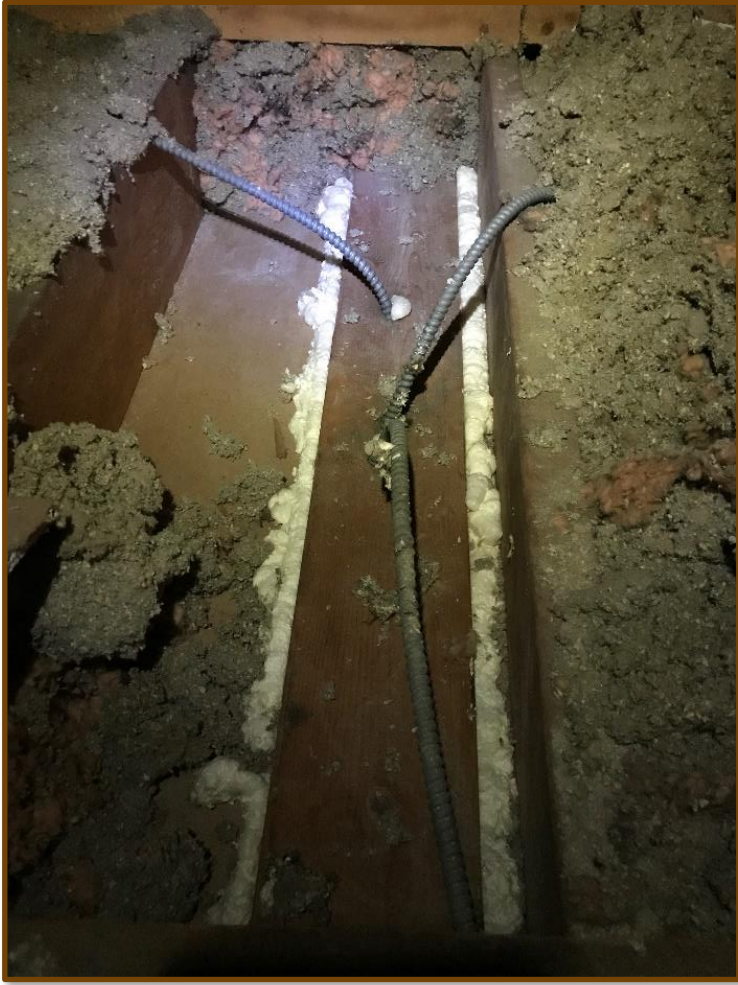
# Education and Community Development



# Advanced Duct Sealing



# Attic Air Sealing and Insulation



# Basement Air Sealing and Insulation





# Common Area and Exterior Lighting



# HVAC / Water Heating





- **To find out more visit:**

- [EnergizeCT.com](http://EnergizeCT.com)
- Call 877-WISEUSE (877.947.3873)

- **Contact information:**

- [Lawrence.Rush@uinet.com](mailto:Lawrence.Rush@uinet.com)

