

# RSIP Aurora Shade Report Guide

Connecticut Green Bank

Revised 3/18/2021



## Aurora Shade Report

Customer

Designer

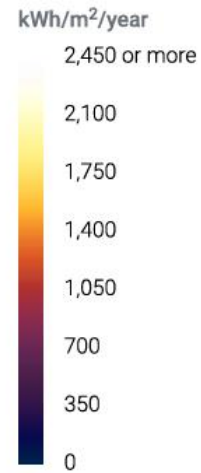
Organization

The Annual Irradiance image should clearly show the arrays and be appropriately zoomed so the site design is clear, and all potential obstructions are visible.

Date

4 March 2021

Annual irradiance



### Summary

Array	Panel Count	Azimuth (deg.)	Pitch (deg.)	Annual TOF (%)	Annual Solar Access (%)	Annual TSRF (%)
1	41	159	33	98	98	96
Weighted average by panel count	-	-	-	-	98.2	96.2

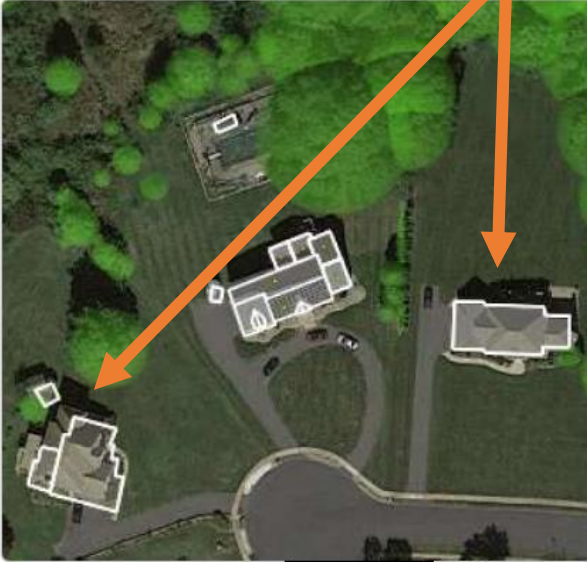
### Monthly solar access (%) across arrays

Array	Jan	Feb	Mar	Apr	May	Jun	Jul	Aug	Sep	Oct	Nov	Dec
1	98	98	98	99	98	98	98	99	99	98	99	99

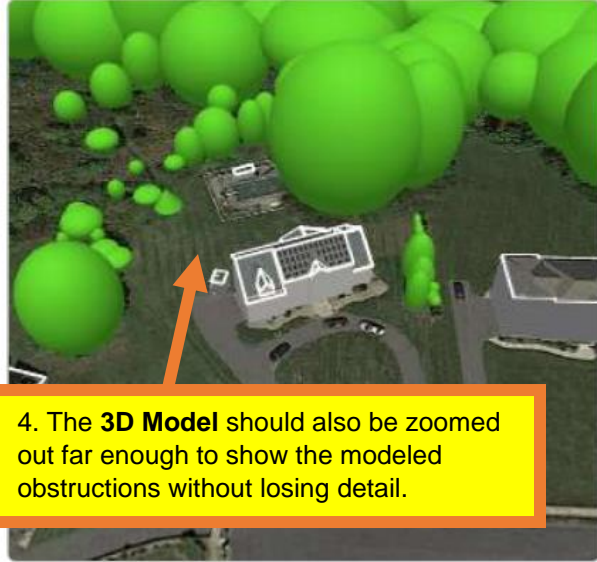
2. The **panel count, tilt, azimuth, and monthly solar access** entered for each array into PowerClerk should match the panel count, tilt, azimuth, and monthly solar access for each array in the Aurora report.

3. The **zoomed-out satellite view** should be centered on the project site and zoomed out far enough to indicate all trees and other obstructions included as potential shading. **All potential obstructions** (trees, buildings, houses, etc.) must be modeled, **even if they do not impact shade**.

Zoomed out satellite view

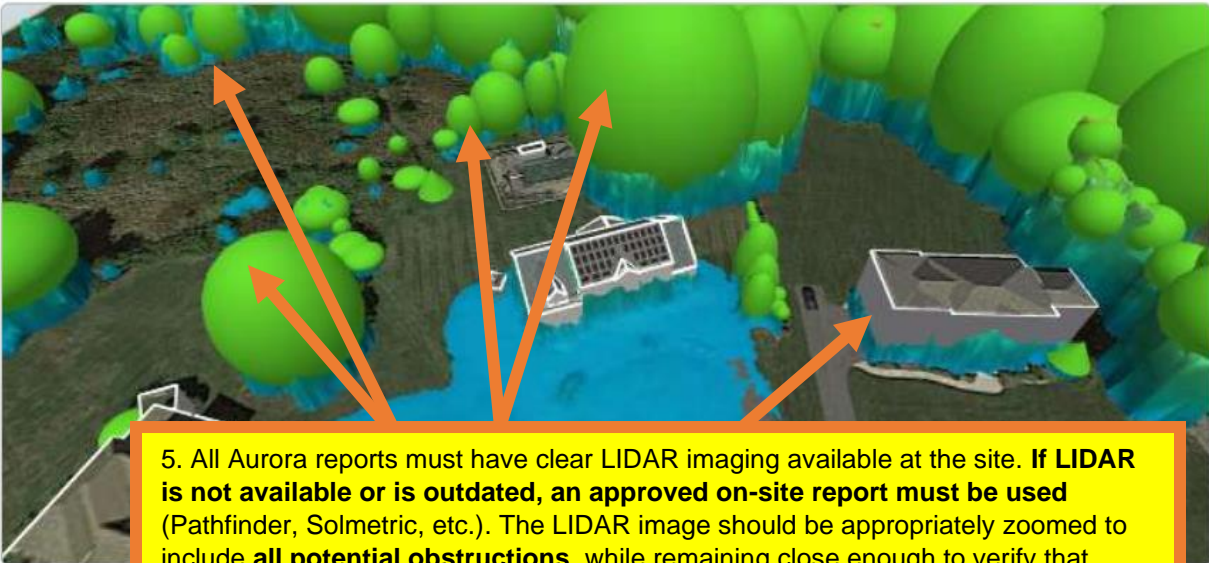


3D model



4. The **3D Model** should also be zoomed out far enough to show the modeled obstructions without losing detail.

3D model with LIDAR overlay



5. All Aurora reports must have clear LIDAR imaging available at the site. **If LIDAR is not available or is outdated, an approved on-site report must be used** (Pathfinder, Solmetric, etc.). The LIDAR image should be appropriately zoomed to include **all potential obstructions**, while remaining close enough to verify that trees and buildings are modeled **at the correct heights and sizes**. Note in the image above that the trees and houses are modeled to the **top of the LIDAR**

Street view and corresponding 3D model



6. The Street view is not always available and is not required. It should be included whenever available. The 3D model should match the street view, when available. It can also be used as another way to show all obstructions.

Google

