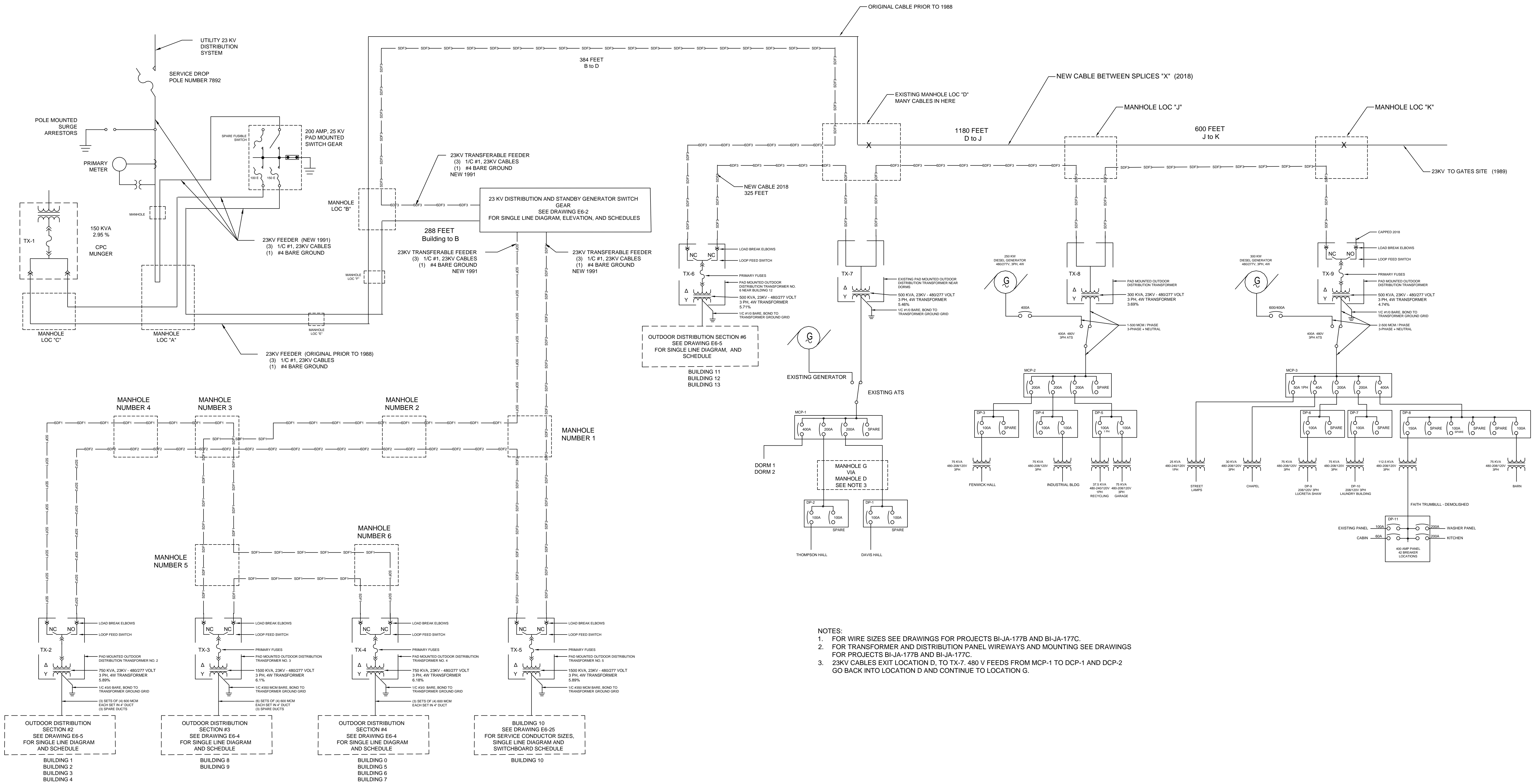
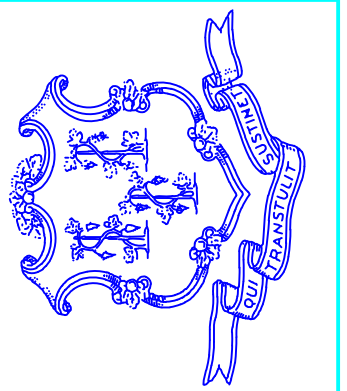


WAY DETRIMENTAL TO THE INTEREST OF THE DEPARTMENT OF CORRECTION. THE DEPARTMENTS SPECIFIC APPROVAL IS REQUIRED PRIOR TO EXPOSURE OF THIS DRAWING TO OTHERS FOR ANY PURPOSE.



- NOTES:
1. FOR WIRE SIZES SEE DRAWINGS FOR PROJECTS BI-JA-177B AND BI-JA-177C.
 2. FOR TRANSFORMER AND DISTRIBUTION PANEL WIREWAYS AND MOUNTING SEE DRAWINGS FOR PROJECTS BI-JA-177B AND BI-JA-177C.
 3. 23KV CABLES EXIT LOCATION D, TO TX-7. 480 V FEEDS FROM MCP-1 TO DCP-1 AND DCP-2 GO BACK INTO LOCATION D AND CONTINUE TO LOCATION G.

REV	DATE	DESCRIPTION OF REVISION
1	7/14/17	INITIAL RELEASE
2	6/25/18	COMBINE SHEETS, CORRECTIONS



STATE OF CONNECTICUT
 DEPARTMENT OF CORRECTION
 FACILITIES MANAGEMENT & ENGINEERING UNIT
 24 WOLCOTT HILL ROAD, WETHERSFIELD, CT 06109
 (860) 692-7565

PROJECT NUMBER: BI-JA-217C
 PROJECT NAME: YORK CORRECTIONAL INSTITUTION
 NIANTIC, CT

DRAWING TITLE: 23 KV POWER DISTRIBUTION

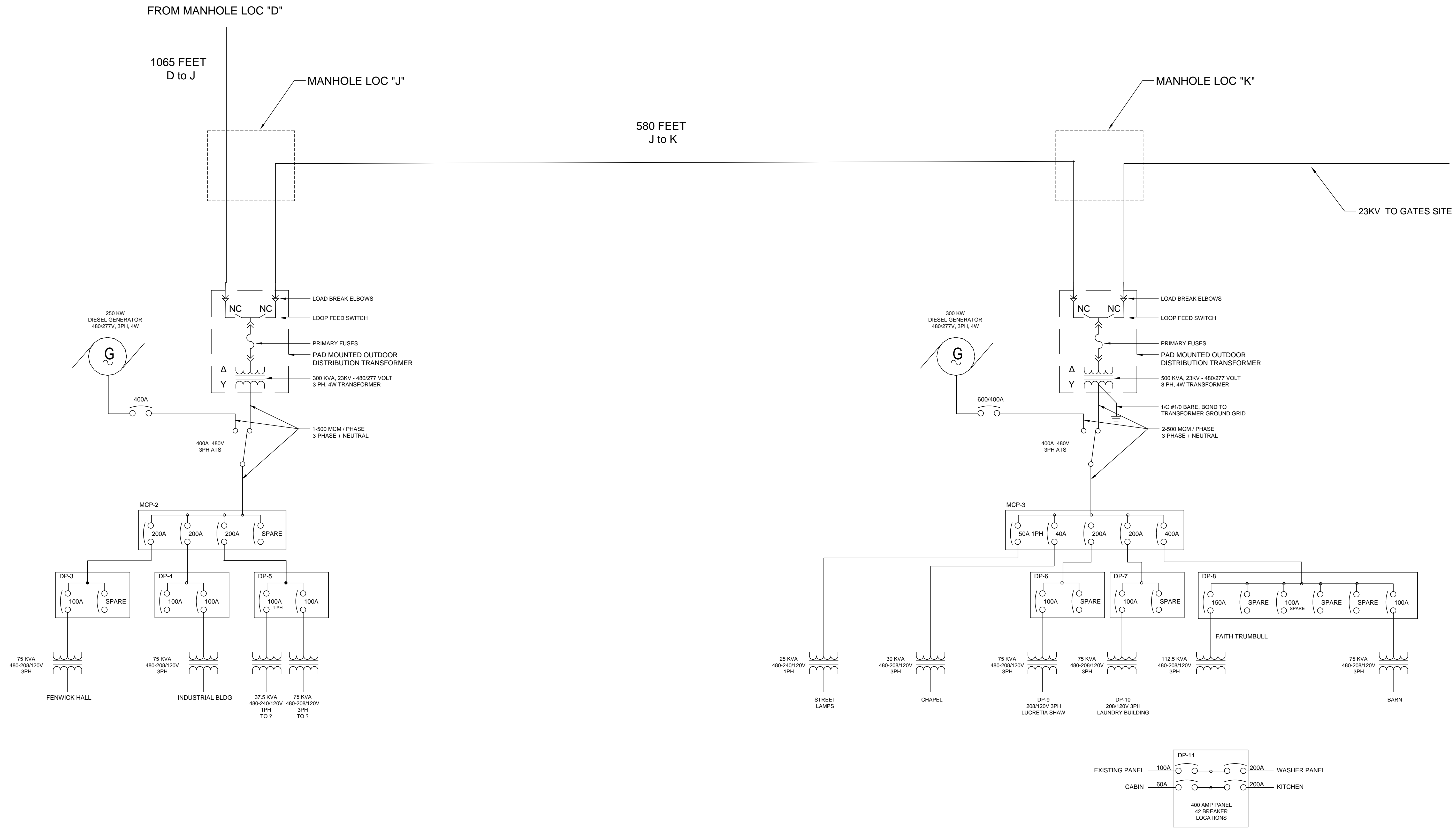
DRAWN BY: JUST
 DATE: 7/14/17
 SCALE:

SHEET NUMBER E6-3
 Sheet 1 of 1

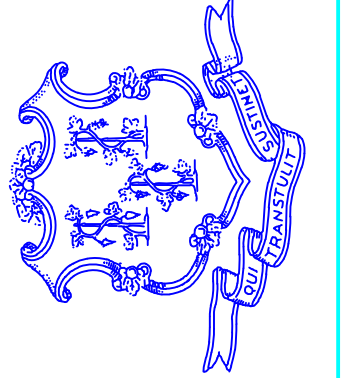
WAY DETRIMENTAL TO THE INTEREST OF THE DEPARTMENT OF CORRECTION. THE DEPARTMENTS SPECIFIC APPROVAL IS REQUIRED PRIOR TO EXPOSURE OF THIS DRAWING TO OTHERS FOR ANY PURPOSE.

NOTES:

1. FOR WIRE SIZES SEE DRAWINGS FOR PROJECTS BI-JA-177B AND BI-JA-177C.
2. FOR TRANSFORMER AND DISTRIBUTION PANEL WIREWAYS AND MOUNTING SEE DRAWINGS FOR PROJECTS BI-JA-177B AND BI-JA-177C.



REV	DATE	DESCRIPTION OF REVISION
1	7/14/17	INITIAL RELEASE



STATE OF CONNECTICUT
 DEPARTMENT OF CORRECTION
 FACILITIES MANAGEMENT & ENGINEERING UNIT
 24 WOLCOTT HILL ROAD, WETHERSFIELD, CT 06109
 (860) 692-7565

PROJECT NUMBER: BI-JA-177B&C
 PROJECT NAME: YORK CORRECTIONAL INSTITUTION
 NIANTIC, CT

DRAWING TITLE: 23 KV POWER DISTRIBUTION SINGLE LINE DIAGRAM

DRAWN BY: JST
 DATE: 7/14/17
 SCALE:

SHEET NUMBER: E6-3
 Sheet 2 of 2