

EVERSOURCE

Account Number: 5189 620 3049
 Statement Date: 05/21/21

Service Provided To:
 STATE OF CT CORRECTIONAL INSTI

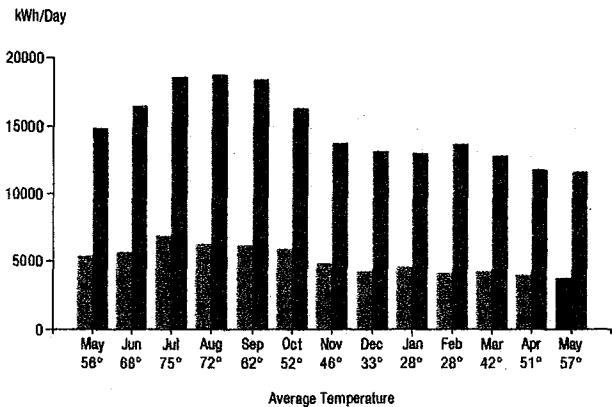
Total Amount Due
 by 07/20/21

\$63,271.84

Amount Due On 05/21/21 \$69,763.48
 Last Payment Received On 05/14/21 -\$69,763.48
 Balance Forward \$0.00
 Total Current Charges \$63,271.84

89202

Electric Usage History - Kilowatt Hours (kWh)



Current Charges for Electricity

Supply

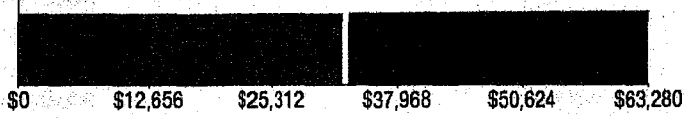
\$32,453.37

Cost of electricity from DIRECT ENERGY BUSINESS, LLC

Delivery

\$30,818.47

Cost to deliver electricity from Eversource



202403

Your electric supplier is
 DIRECT ENERGY BUSINESS, LLC
 1001 LIBERTY AVE
 PITTSBURGH PA 15222-3714
 888-925-9115

VOUCHER ID# *526731*
 INITIALS *LM*
 DATE *6/8/21*
 APPROVED BY *ECE19*
 DATE *6/8/21*

RA 398089

News For You

If you're having trouble paying your bill, we have programs to help - even if you've never needed them before. Call us at 800-286-2828 for residential and 800-682-3637 for businesses or visit Eversource.com/BillHelp for info on payment plans and other assistance programs available to you.

Remit Payment To: Eversource, PO Box 56002, Boston, MA 02205-6002

CE_210521PROD.TXT-153347-00002000

EVERSOURCE

Account Number: 5189 620 3049

Total Amount Due
 by 07/20/21 **\$63,271.84**

Amount Enclosed

STATE OF CT CORRECTIONAL INSTI
 FISCAL SERVICES

D76674 000002D00



STATE OF CT CORRECTIONAL INSTI
 ATTN: A/P UTILITY
 PO BOX 290891
 WETHERSFIELD CT 06129-0891

2021 JUN -3

Eversource
 PO Box 56002
 Boston, MA 02205-6002

5189620304947 0063271841 0063271841

EVERSOURCE

Account Number: 5189 620 3049

Customer name key: CT C

Statement Date: 05/21/21

Service Provided To:
STATE OF CT CORRECTIONAL INSTI

Total Amount Due
by 07/20/21

\$63,271.84

**Svc Addr: 201 W MAIN ST
LOT RTE156
NIANTIC CT 06357**

Serv Ref: 157502000 **Bill Cycle: 15**
Service from 04/23/21 - 05/21/21 **28 Days**
Next read date on or about: Jun 22, 2021

Meter Number	Current Read	Previous Read	Current Usage	Reading Type
081031681	2026	1981	45	On Peak
081031681	5924	5786	138	Off Peak

Total Demand Use = 897.60 kW
 45 X Meter Constant of 2,400 = 108000 Billed Usage
 138 X Meter Constant of 2,400 = 331200 Billed Usage
 Max Off-Peak Demand: 892.8 kW
 Max On-Peak Demand: 897.6 kW
 Max Off-Peak Demand: 928.8 kVA
 Max On-Peak Demand: 940.8 kVA

Monthly kWh Use - On Peak

May	Jun	Jul	Aug	Sep	Oct	Nov
157584	183456	214032	183456	199920	178752	141120
Dec	Jan	Feb	Mar	Apr	May	
136416	141120	129360	124656	124656	105840	

Monthly kWh Use - Off Peak

May	Jun	Jul	Aug	Sep	Oct	Nov
430416	526848	576240	543312	588000	489216	397488
Dec	Jan	Feb	Mar	Apr	May	
418656	402192	423360	371616	364560	324576	

Electric Account Summary

Amount Due On 05/21/21	\$69,763.48
Last Payment Received On 05/14/21	-\$69,763.48
Balance Forward	\$0.00
Current Charges/Credits	
Electric Supply Services	\$32,453.37
Delivery Services	\$30,818.47
Total Current Charges	\$63,271.84
Total Amount Due	\$63,271.84

Total Charges for Electricity

Supplier

DIRECT ENERGY BUSINESS
 Service Reference: 157502000

Generation Srvc Chrg**	430416.00kWh X \$0.07540	\$32,453.37
Subtotal Supplier Services		\$32,453.37

Delivery

(DISTRIBUTION RATE: 058)

Service Reference: 157502000

Prod/Trans Dmd Chrg	940.80KVA X \$8.94000	\$8,410.75
Distr Cust Srvc Chrg		\$1,100.00
Distribution Dmd Chrg	1689.60KVA X \$7.68000	\$12,976.13
Electric Sys Improvements***	1689.60KVA X \$0.42000	\$709.63
Revenue Adj Mech On-Pk	105840.00kWh X \$-0.00011	-\$11.64
Revenue Adj Mech Off-Pk	324576.00kWh X \$-0.00011	-\$35.70
Facilities Ownrshp Credit	1000.00KW X \$-0.20000	-\$200.00
	574.40KW X \$-0.10000	-\$57.44
Prod/Trans CTA Dmd Chrg	940.80KVA X \$-0.08000	-\$75.26
FMCC Delivery Chrg On-Pk	105840.00kWh X \$0.02908	\$3,077.83
FMCC Delivery Chrg Off-Pk	324576.00kWh X \$0.00622	\$2,018.86
Combined PBC - On-Pk*	105840.00kWh X \$0.00675	\$714.42
Combined PBC - Off-Pk*	324576.00kWh X \$0.00675	\$2,190.89
Subtotal Delivery Services		\$30,818.47

CE_210521PROD.TXT-153348-00002000

Explanation of your charges

*The Combined Public Benefits Charge represents a combination of three charges formerly know as: Conservation and Load Mgmt Charge, Renewable Energy Investment Charge, and Systems Benefits Charge. This charge also includes the Conservation Adjustment Mechanism approved by the Public Utilities Regulatory Authority in Docket No. 13-11-14.

**Effective January 1, 2007, the Generation Services Charge (GSC) and the Bypassable Federally Mandated Congestion Charge (BFMCC) have been combined into the "GSC Charge" listed in the Supplier Services section of your bill. The GSC reflects all of the cost of procuring energy from Eversource wholesale suppliers. The BFMCC portion of this line item is -\$0.00050 / kWh. If you multiply this BFMCC rate by the number of kWhs on your bill, you can calculate the dollar amount associated with the BFMCC.

***Electric System Improvements: Recovers company investments that protect, strengthen or modernize the electric grid.

EVERSOURCE

Account Number: 5189 620 3049

Customer name key: CT C

Statement Date: 05/21/21

Service Provided To:
STATE OF CT CORRECTIONAL INSTI

Total Amount Due
by 07/20/21

\$63,271.84

Continued from previous page...

Total Cost of Electricity \$63,271.84

Total Current Charges \$63,271.84

Continued from previous page...

Contact Information

Emergency: 800-286-2000

www.eversource.com

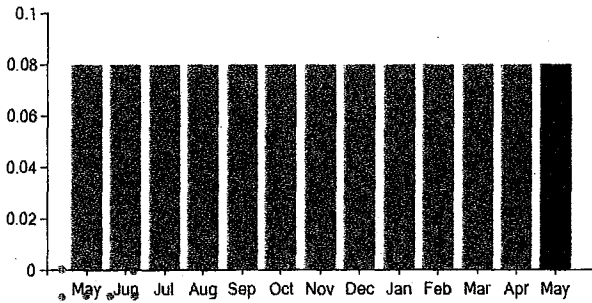
BusinessCenterCT@eversource.com

Pay by Phone: 888-783-6618

Customer Service: 888-783-6617

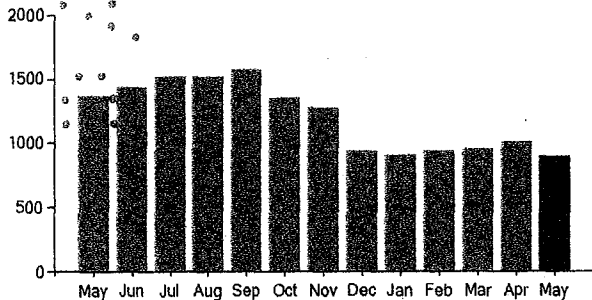
Supply Rate

Dollars / kWh



Demand Profile

Max. Demand



Important Messages About Your Account

Distribution Demand based on ratchet

2% Primary Meter Discount 439200.0 KWH 430416.0KWH BILLED

Max KW vs Max KVA Ratio = 897.600/940.800=0.950

Power Factor at Max KVA = 897.600/940.800=0.950





EVERSOURCE

Account Number: 5129 390 3043
Statement Date: 05/28/21

Service Provided To:
STATE OF CT DEPT OF CORRECTION

Total Amount Due
by 07/27/21

\$11.71

Amount Due On 05/28/21	\$12.02
Last Payment Received On 05/14/21	-\$12.02
Balance Forward	\$0.00
Total Current Charges	\$11.71

89202

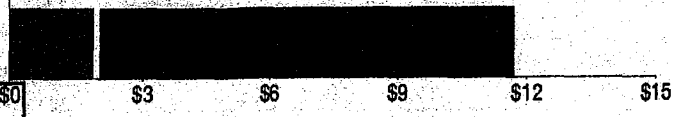
Current Charges for Electricity

Supply	Delivery
\$1.92	\$9.79
Cost of electricity from DIRECT ENERGY BUSINESS, LLC	Cost to deliver electricity from Eversource

Ref 202403

VOUCHER ID#	527421
INITIALS	LM
DATE	6/14/21
APPROVED BY	ECCIF
DATE	6/15/21

Ref 398274



Your electric supplier is
DIRECT ENERGY BUSINESS, LLC
1001 LIBERTY AVE
PITTSBURGH PA 15222-3714
888-925-9115



News For You

Adjustments to some of the rates on your bill will take effect in June and July. The Public Utilities Regulatory Authority reviews and approves all adjustments before they go into effect. Energy use also goes up in the summer - driven by cooling cost - and may result in higher-than-usual bills. See how our energy efficiency solutions can help you save by visiting Eversource.com/home-savings.

Remit Payment To: Eversource, PO Box 56002, Boston, MA 02205-6002

CE_210528PROD.TXT-146631-000001941

EVERSOURCE

Account Number: 5129 390 3043

Total Amount Due
by 07/27/21 **\$11.71**

Amount Enclosed

FISCAL SERVICES
DEPT. OF CORRECTION

073316 000001941



STATE OF CT DEPT OF CORRECTION
ATTN: A/P UTILITY
PO BOX 290891
WETHERSFIELD CT 06129-0891



Eversource
PO Box 56002
Boston, MA 02205-6002

5129390304339 0000011710 0000011710



EVERSOURCE

Account Number: 5129 390 3043

Customer name key: CT D

Statement Date: 05/28/21

Service Provided To:
STATE OF CT DEPT OF CORRECTION

Svc Addr: 201 W MAIN ST

LOT RTE156

NIANTIC CT 06357

Rate 116 Serv Ref: 907293005

Bill Cycle: 15

Service From: 04/30/21 - 05/28/21

28 Days

8500 LED

Number of Devices	Unmetered Usage
0001	26 kWh

Monthly kWh Use

May	Jun	Jul	Aug	Sep	Oct	Nov
26	23	25	27	30	35	38
Dec	Jan	Feb	Mar	Apr	May	
40	40	34	33	28	25	

Contact Information

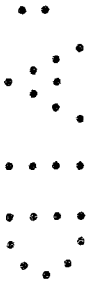
Emergency: 800-286-2000

www.eversource.com

BusinessCenterCT@eversource.com

Pay by Phone: 888-783-6618

Customer Service: 888-783-6617



Total Amount Due
by 07/27/21

\$11.71

Electric Account Summary

Amount Due On 05/28/21	\$12.02
Last Payment Received On 05/14/21	-\$12.02
Balance Forward	\$0.00
Current Charges/Credits	
Electric Supply Services	\$1.92
Delivery Services	\$9.79
Total Current Charges	\$11.71
Total Amount Due	\$11.71

Total Charges for Electricity

Supplier

DIRECT ENERGY BUSINESS

Service Reference: 907293005

Generation Srvc Chrg** 25.50kWh X \$0.07540 \$1.92

Subtotal Supplier Services \$1.92

Delivery

(DISTRIBUTION RATE: 116)

Service Reference: 907293005

Transmission Chrg 25.50kWh X \$0.01599 \$0.41

Distribution \$8.75

FMCC Delivery Chrg 25.50kWh X \$0.00958 \$0.24

Comb Public Benefit Chrg* 25.50kWh X \$0.00741 \$0.19

Electric Sys Improvements*** 25.50kWh X \$0.00786 \$0.20

Subtotal Delivery Services \$9.79

Total Cost of Electricity \$11.71

Total Current Charges \$11.71

CE_210528PROD.TXT-146632-00001941

Explanation of your charges

*The Combined Public Benefits Charge represents a combination of three charges formerly know as: Conservation and Load Mgmt Charge, Renewable Energy Investment Charge, and Systems Benefits Charge. This charge also includes the Conservation Adjustment Mechanism approved by the Public Utilities Regulatory Authority in Docket No. 13-11-14.

**Effective January 1, 2007, the Generation Services Charge (GSC) and the Bypassable Federally Mandated Congestion Charge (BFMCC) have been combined into the "GSC Charge" listed in the Supplier Services section of your bill. The GSC reflects all of the cost of procuring energy from Eversource wholesale suppliers. The BFMCC portion of this line item is -\$0.00050 / kWh. If you multiply this BFMCC rate by the number of kWhs on your bill, you can calculate the dollar amount associated with the BFMCC.

***Electric System Improvements: Recovers company investments that protect, strengthen or modernize the electric grid.

EVERSOURCE

Account Number: 5129 390 3043

Customer name key: CT D

Statement Date: 05/28/21

Service Provided To:
STATE OF CT DEPT OF CORRECTION

Total Amount Due
by 07/27/21

\$11.71

Continued from previous page...

Supply Rate

Dollars / kWh

