



Green & Healthy Homes Initiative®



# Connecticut Green & Healthy Homes Initiative

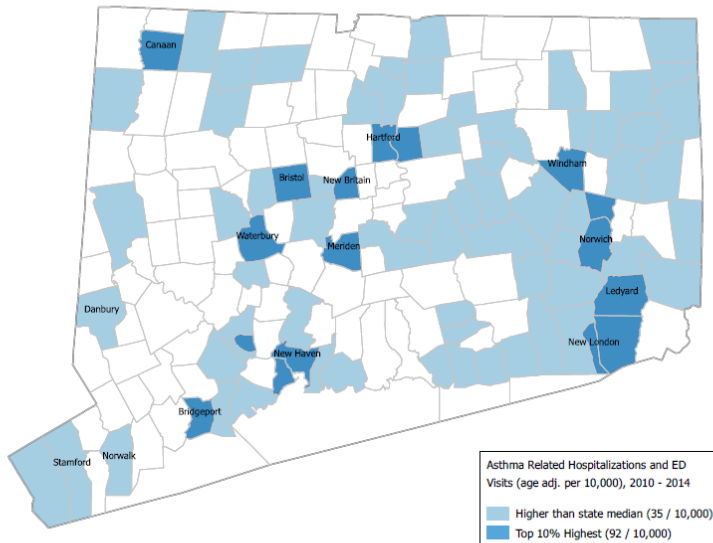
**Working Together to Advance Connecticut's  
Health, Energy and Housing Goals**

Multifamily Peer-To-Peer Network  
January, 2019

# Connecticut's Housing-Related Health Needs

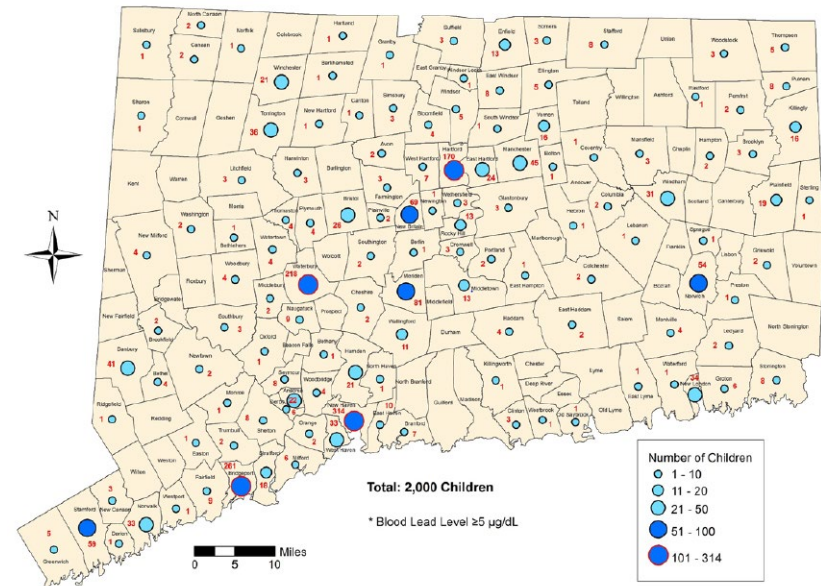
- 2,000 children under the age of six are diagnosed with elevated blood lead levels in Connecticut.
- Connecticut had over 21,700 annual asthma-related hospitalizations, and over \$102 million in Medicaid claims related to asthma.
- Falls were involved in over 42,000 hospitalizations in Connecticut over 5 years.

Per Capita Asthma-Related Hospitalizations and ED Visits (Kids and Adults), 2010 - 2014



Source: Green & Healthy Homes Initiative (GHHI) Analysis of Connecticut Department of Public Health Asthma Program data derived from Connecticut Hospital Information Management (CHIME), 2010 - 2014

Number of Lead Poisoned Children\* Under 6 Years Old by Town, Connecticut 2016

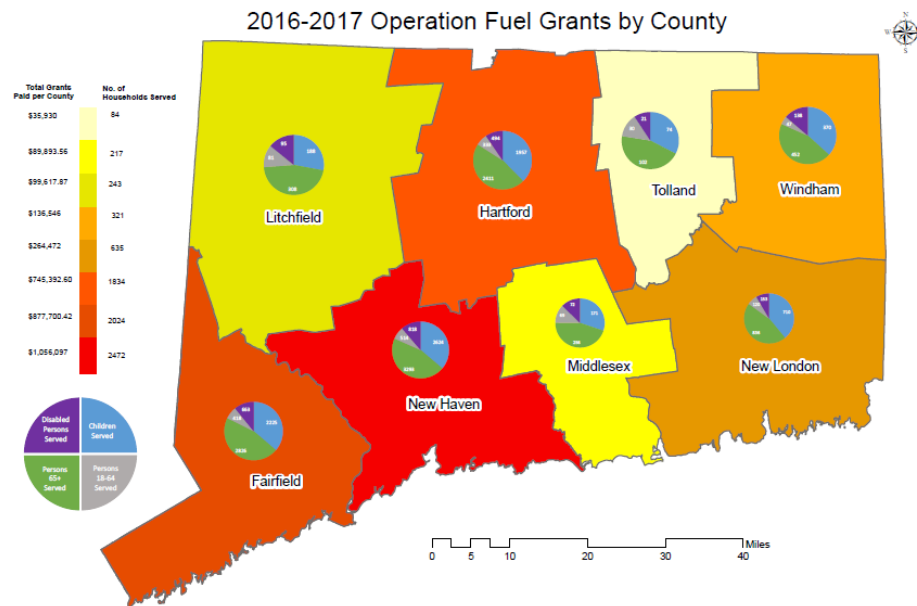


# Connecticut's Housing-Related Energy Needs

## Reducing Energy Burdens for Those That Need It Most

Energy costs are a significant portion of household expenses, but 30% of homes can't be served due to health & safety issues

- Among the highest energy rates and costs in the country
- More than half our low income residents suffer a high energy cost burden (>10% of income)
- “Energy Affordability Gap” ranges from \$1,250 to \$2,500 per year
- Energy efficiency on its own can improve indoor air quality and health



# Recognizing the Social Determinants of Health

## Equity Impacts of Housing and Energy Insecurity

### **Economic Impacts**

- Reduced productivity
- Lower job security
- Fewer benefits
  - Paid time off
  - Health insurance

### **Health Impacts**

- Exposure to environmental hazards
  - Lead based paint
  - Asthma triggers
- Mental health conditions
  - Stress
  - Anxiety
  - Depression
- Childhood stress
  - Chronic health conditions

### **Education Impacts**

- Poor grade level performance
- Lower graduation rates
- Lost earning potential

## Shared Vision of Holistic Health, Housing and Energy Services in Connecticut

“Any family in Connecticut – whether they seek treatment for asthma from their healthcare provider, contact their utility for energy efficiency services, or seek housing repairs from a local social service nonprofit – would get the package of interventions to holistically meet their needs, improve health outcomes, reduce energy burdens and make their home green, safe and healthy.”

-Connecticut Green & Healthy Homes Initiative Needs Justification Statement, February 2018



**Our Collective Opportunity:**

Solve the funding gaps

Break down silos – for funding and delivery

**Do this sustainably – solve the problem at scale**

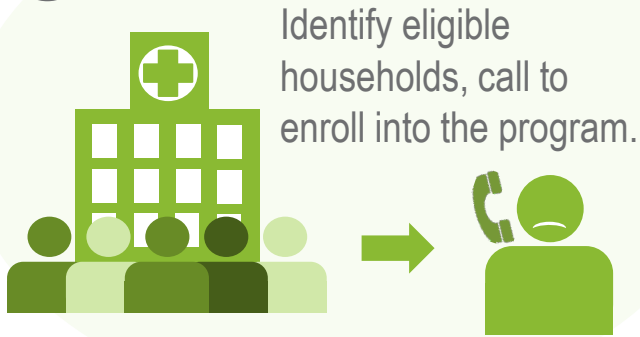
## Strong Partnerships in Housing, Health and Energy Sectors



Ongoing engagement with over 100 stakeholders – state lawmakers, community-based providers, energy efficiency contractors, healthcare advocates, researchers, health systems and others.

# Evidence-based Interventions Produce Measurable Results

## 1 Intake and enrollment



## 2 Initial Home Visit



## 3 Healthy Homes education and home repairs



## 4 Evaluation of outcomes



# Integrated Models Produce Measurable Outcomes

## GHHI Baltimore

- **66%** reduction in asthma-related hospitalizations
- **62%** increase in asthma-related perfect school attendance
- **88%** increase in never missing work due to their child's asthma

## GHHI Philadelphia

- **70%** fewer asthma-related client hospitalizations
- **76%** fewer asthma-related client ED visits

## GHHI Cleveland

- **58%** reduction in asthma-related client hospitalizations
- **63%** reduction in asthma-related client ED visits



## Economic Feasibility Research Steps

**Analyze health care utilization rates and associated costs**



**Project potential cost savings**



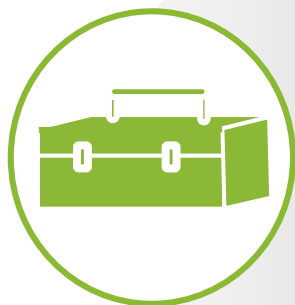
**Examine the potential models for (leveraged) healthcare investment**



**Grow the support of partners for investment in healthy housing**

## Opportunity for Sustainable, Long-term Support for Healthy Homes

*Developing an innovative healthy homes investment toolbox...*



**Medicaid, Chip Waivers & State Plan Amendments**

**Hospital Community Benefits**

**Pay for Success financing with value-based purchasing**

**Connecticut's Patient-Centered Medical Home + Shared Savings Program**

**Connecticut's State Improvement Plan (SIM) funds**

**Medicare Advantage Plans**

# Project Goals over Three Phases

- To provide a **comprehensive analysis** of the economic, technical and operational **feasibility** of a statewide model for housing, health and energy services in Connecticut.
- To identify **sustainable support** via innovative strategies for public, private and philanthropic investment in housing, health and energy services, including outcomes-based Medicaid investment, philanthropic support and leveraged public investment.
- To design models that **leverage and expand Connecticut's existing framework for Utility Rate Payer-Funded Energy Efficiency Services** to implement a comprehensive statewide housing, health and energy services model.

## PHASE I

*Complete*

- Asset and Gap Analysis (Pre-Feasibility Research)
- Convenings

## PHASE II

*Summer 2018-Summer 2019*

- Feasibility Research (Medicaid ROI analysis)
  - Convenings
  - Working Groups
  - Pilot Design

## PHASE III

*2019-2021*

- Multi-site pilot implementation
  - Evaluation
- Recommendation for statewide model

# CT Green and Healthy Homes Resources to Leverage

*Findings from the asset and gap analysis show a strong foundation for this model...*

**National leader in energy-efficiency services & green financing.**

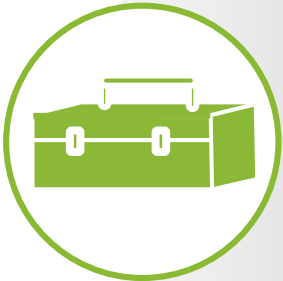
Unique **organization of the state's public insurance delivery system** may enable support for healthy housing services with proven health outcomes.

Robust **public-private leverage models** in place in housing and energy sectors (DOH, CHFA, and CGB).

State **agencies share a vision** for improving housing quality to advance goals across the housing, health and energy sectors.

**CT Energy Efficiency Fund Home Energy Solutions Program is a strong framework for** housing health and safety interventions, sustainably supported through a mix of:

- Health insurance outcomes-based payments
- Funding medically-necessary housing interventions through CHIP & Medicaid
- Hospital community benefits investment; public/philanthropic investment (leveraged to attract private capital)
- Federal funds



# Discussion

## Considerations for this model and CT's affordable multifamily housing

- Example: health care \$'s follow the patient, but some interventions “spill over” into other units

Interested in participating in convening or working groups?

## Project Resources

**Project Website:** <https://ctgreenbank.com/ct-ghhi/>

**Needs Justification Statement** [here](#)

**Asset & Gap Analysis (Pre-Feasibility Analysis)** [here](#)

**June 2018 Legislative Briefing Presentation** [here](#)

**Funders 2-page Overview** [here](#)

# Contact Information

## Connecticut Green Bank

**Kerry O'Neill:**

[kerry.oneill@ctgreenbank.com](mailto:kerry.oneill@ctgreenbank.com)

**Madeline Priest**

[madeline.priest@ctgreenbank.com](mailto:madeline.priest@ctgreenbank.com)

## Department of Public Health

**Kristin Sullivan**

[kristin.sullivan@ct.gov](mailto:kristin.sullivan@ct.gov)

**Sandra Gill**

[sandra.m.gill@ct.gov](mailto:sandra.m.gill@ct.gov)

## GHHI

**Catherine Klinger**

[cklinger@ghhi.org](mailto:cklinger@ghhi.org)

**Will Klein**

[wklein@ghhi.org](mailto:wklein@ghhi.org)

## Phase II: Project Design

- Feasibility Research and Full Report (Winter-Spring 2019)
- Pilot Project Design (Spring 2019)
- Develop Connecticut state specific green & healthy homes project model that integrates energy efficiency interventions with health interventions
- Project design for how Medicaid funded resident educations, housing assessments and interventions (to reduce asthma episodes, lead hazards, household injury risks) would be integrated with state funded weatherization and energy efficiency interventions and other housing intervention
- Design would produce comprehensive interventions where home-based environmental health hazards are remediated and energy loss is addressed
- Lead working groups to develop project model and make recommendations for pilot project sites in Connecticut



## Phase III: Pilot Implementation – Proving Out the Model

- Pilot Project Development and up to 3-year Implementation and Evaluation (2019-2022)
  - CGB, DPH, and other project partners will implement the innovative model in Pilot Project sites in the State of Connecticut
  - By studying the actual data from the Pilot Project sites, the State will test its hypothesis that these comprehensive home interventions provide better health outcomes at a cost savings to taxpayers as compared to repeated asthma hospitalizations/ER visits, lead poisonings and other home-based environmental health hazard related medical costs (as well as providing material energy savings that will reduce the household cost burden)
  - If this hypothesis is substantiated by the Connecticut Green & Healthy Homes Pilot Data, the State would then propose that Medicaid fund resident education and healthy homes housing interventions in coordination with energy efficiency programs through new project model